



NEWSLETTER

AUGUST 2025
VOLUME 2025 ISSUE 08

INSIDE THIS ISSUE

NEXT MEETING INFORMATION

LAST MEETING RECAP

MUSINGS

MEMBERSHIP INFORMATION

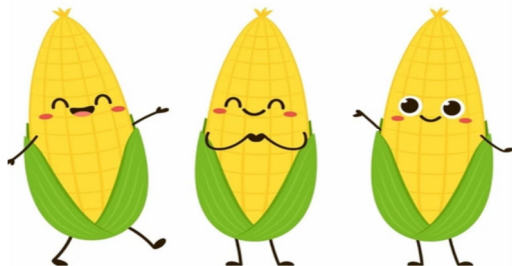
RESOURCE INFORMATION

ABOUT THIS NEWSLETTER

STEERING COMMITTEE MEMBERS

Next meeting:
WEDNESDAY
AUGUST 13TH 2025

7:00 PM – New Berlin Ale House
16000 West Cleveland Avenue
New Berlin, WI 52151



Come see the next meeting to hear a fun earful!
Nothing salty – bring your favorite niblet with you.
Enjoy the historical butter, riveting kernels of
discovery and new tools like hot sauce



AUGUST PRESENTATIONS

• **SOCIAL SECURITY, STEPHEN MORSE AND GENEALOGY**

By Bob Tatalovich

- Join us as Bob takes us on a fascinating journey through the history of the Social Security Administration. He'll explore how Social Security numbers were originally assigned, guide us through the invaluable tools of Stephen Morse's One-Step website, and reflect on the Trump Administration's review of the agency.

• **NEW STUFF ON ANCESTRY & IN WINDOWS FOR THE GENEALOGIST**

By Randy Ray

- Get ready for an eye-opening look at the latest developments in the world of genealogy as Randy Ray showcases the newest tools and features from Ancestry.com. Discover how to breathe new life into old memories with free photo enhancement programs, learn simple tricks for editing images using built-in Windows tools, and uncover hidden gems through City Directories, historic photos, and even YouTube videos—all of which can offer deeper insights into the villages and communities your ancestors once called home.

JULY MEETING RECAPS

• **MURDER!! IN YOUR FAMILY TREE** **By Randy Ray**

- Randy covered 13 murders that were peeking out of his family history.
- Helpful tools to help validation:
 - Newspapers and death certificates, which sometimes would list cause of death.
 - Research Wiki (covers worldwide) on Family Search.
 - Library of Congress.com in their newspaper section, you will find Chronicling America
 - Badger Link
- It was enthralling to hear how the seemingly normal lives Randy was sharing with us would eventually and sadly turn into the unimaginable conclusion of murder. Several convicted are still serving time today.
- Great job Randy – thank you!.

• **MORE MURDER!! IN THE FAMILY TREE** **By Debbie Bluett**

- Debbie beautifully unfolded a heart-tugging story of a double murder that took place in 1879 in Minnesota, along with the aftermath.
- Henry Kolway and Frank Steinhuber were murdered, and their bodies were hidden. Still talked about 150 years later!
- She took us through challenges she encountered over four decades of changing techniques. 13 different surname spellings!
- Most importantly, she reminded us about the cautions when researching such impactful situations:
 - Be generous in sharing
 - Be kind and sensitive
- Compassionately shared and lovingly researched.
- Fantastic job Debbie - Thank you!

MUSINGS & MUTTERINGS:

August brings summer into full swing with festivals, fairs, vacations and fun on the water.

- Many churches have their main fund-raising festivals during the summers. Did Great-great Grandma enjoy a turn on the carousel, play bingo, hope she wins the raffle or close out the night watching fireworks?
- Ethnic festivals in Milwaukee run most of the summer. August brings Irish Fest, which is the largest Irish cultural festival in North America, and Mexican Fiesta, which celebrates Mexican culture.
- State Fair has such a great history along with all the County Fairs. What a great place to watch people and eat great food. What are your favorites?
 - 4H showings-food, animals, sewing
 - Cream puffs, flavored milks, ag building, loaded potatoes, beef or pork sandwiches, everything on a stick
 - Games and midway rides
 - Concerts, dancing exhibitions, cultural melting pot of sharing
 - Pig races, dog dock diving, daily parade, coliseum competitions



From the Wisconsin Historical Society, here is an event stamp from 1915

JULY meeting attendance **30**

LET'S TALK MPAFUG! 2026

We have a great lineup for the remaining meetings for 2025 including our annual Show and Tell in October.

Steering Committee is already busy planning meeting topics for 2026 and would like your help.

This group is your group.



- What do you want to hear about?
- Would you be interested in:
 - Guest speakers?
 - Demonstrations?
 - Workshops?
- What research do you want to know more about?
- Q&A sessions with Bob and Randy?
- Specific ethnicities information challenges and tools to use?
- Are there suggestions on your mind that we should incorporate?
- Keeping the hunger for heritage alive is challenging. Would you like to be a speaker?
- What can you do to bring the next generation into your research journey?
- Attendance at our meetings pre-covid were 100+ routinely. We are looking to grow our attendance again as we now average 30.
- What would you like to see to help raise attendance?
- Bring a friend, neighbor, relative, spouse, co-worker. It's fun stuff!

WE WOULD LOVE TO SEE YOU!

MEMBERSHIP UPDATE

Membership in MPAFUG is open to anyone interested in learning more about computer genealogy.

203– the number of families currently enrolled memberships.

\$12 – the cost per calendar year membership that covers individual and family

Please send a check for \$12.00 made payable to MPAFUG or bring to the next meeting:

Include: name, address, email & phone number.

Deborah A. Bluett

MPAFUG Treasurer

PO Box 229

Delavan, WI 53115-0229

RESOURCES

The Family Search Center

9600 West Grange Avenue, Hales Corners

The Family Search Center Library hours:

Tuesday: 8:30AM – 3:30PM

Wednesday: 8:30AM – 12 Noon

Thursday: 8:30AM – 3:30PM and
6:30PM – 9:00PM

Saturday: 10:00AM – 1:00PM

Enter at the main doors facing West Grange Avenue and follow the signs to the library.

On Thursday evenings, Bob Heck and Randy Ray are the volunteers on duty who will assist you in your research.

For some extra special help from May through September, Cheryl Heck is there to help you. Cheryl is LDS Mormon and is the expert in the Family Search website and LDS issues.

There are numerous portal systems available for free use at the center.

Come enjoy this resource!

MPAFUG KEY INFORMATION

About This Newsletter

This newsletter is the official monthly publication of the Milwaukee PAF Users Group. All rights are reserved. No articles herein may be reproduced for profit or commercial gain without the express written consent of the Publisher or the Milwaukee PAF Users Group. Other PAF Users Groups may republish articles freely but must include credit to the authors and for the Milwaukee PAF Users Group Newsletter.

Members interested in submitting articles may email them to bobheckmpafug@gmail.com. The MPAFUG publisher will determine if an article will be used in this newsletter. Articles will be used as space permits.

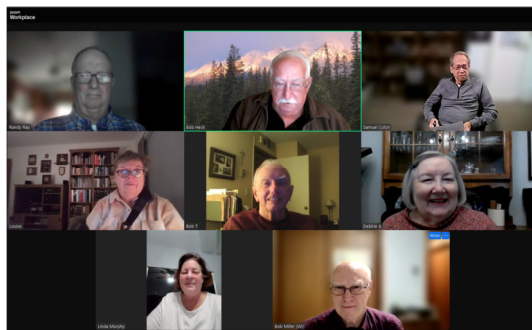
NO COPYRIGHTED ARTICLES may be submitted without express permission of the author and publisher. Articles should be submitted by the 1st Wednesday to be considered for inclusion in that same month. Credit will be given for your article.

STEERING COMMITTEE MEMBERS

Bob Heck	Jane Orne	Randy Ray
Bob Miller	John Canapa	Sam Colon
Bob		Steve
Tatalovich	Linda Murphy	Gulgowski
		Merilyn
Debbie Bluett	Louise Stack	Romani

Steering committee meetings are held via Zoom on the third Wednesday of the month except in December. The Steering Committee is an informal group of members who get together to plan topics for future meetings.

All MPAFUG members are welcome to attend.



If you would like to make a presentation or have a suggestion for a meeting topic

Write, call or email:
MPAFUG c/o Bob Heck
4910 Steeple Dr. .

Greendale, WI 53129
414-421-7143

bobheckmpafug@gmail.com

OUR WEB PAGE

<http://mpafug.org>

We invite you to visit our page, print a copy of this or last month's newsletter. You'll find a surname section where you can see who else is working on your family line.

Members of MPAFUG have access to a members-only web page which contains past newsletters and handouts from our meetings.

