

**INSIDE THIS ISSUE**

NEXT MEETING INFORMATION

LAST MEETING RECAP

HELP WANTED & MUSINGS

MEMBERSHIP INFORMATION

RESOURCE INFORMATION

ABOUT THIS NEWSLETTER

STEERING COMMITTEE MEMBERS

**Next meeting:  
 WEDNESDAY  
 APRIL 8<sup>TH</sup> 2026**



**6:40 PM – NEW BERLIN LIBRARY\***  
**15105 West Library Lane**  
**New Berlin ~ WI 53151**

**DOORS OPEN AT 6**

Come early, get comfy and bring your favorite chick!



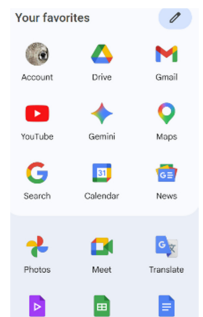
**APRIL PRESENTATIONS**

***GENEAOLOGY 201 – The Next Steps***  
**By Randy Ray**

- Previously, we visited some of the back-to-basic resources to remind everyone to not overlook the foundational options. Now Randy will cover the next group of tools to take your research beyond the standards.
- Randy will be lining up resources and discussing more things to learn about genealogy and where to go from here.
- Looking into the why and where, and the programs to use.

***GOOGLE UPDATES***      **By Bob Heck**

- Bob has a great way of making updates fit as a useful tool for our toolbox every time.
- This time he will cover nuances to existing tools and how they have been upgraded.
- Combining artificial intelligence (AI) with the search engine power already in Google, it has become one of the best systems for research.
- The topics will cover
  - Using Google Maps
  - Google Videos
  - Gemini AI
  - Google Books
  - Google Photos
  - Google Newspaper
  - Google Search
- Looking forward to increasing our confidence in using these tools.



**MARCH MEETING RECAP**  
**RANDY RAY EVENT NIGHT**  
**CLOUD STRUCTURE – IS IT RIGHT**  
**FOR YOU**

What a great night it was to get a better handle on storage options and back-up insights. Randy covered all the evening's options for the researcher of today. There are a number of free options to secure your data all the way to various low-medium-high structures to cover all your needs. Build to your needs and most all are scalable to grow with your projects. Managed by third-party providers, it offers benefits like automatic backups, and remote accessibility across multiple devices.

**BACK-UP STRATEGIES FOR**  
**PROTECTING YOUR RESEARCH**

Next, he covered some of the many options to back-up your files, so you don't lose it all. Everyone has different needs and systems and levels required. If you need help – bring in your equipment to the Family Search Center or one of our monthly meetings and the guys can likely help you get through it. From the process of creating a secure, secondary copy of your data—files, photos, or entire system settings—and then storing it in a separate location, such as an external drive or cloud storage.

Instilling the 3-2-1 backup rule is still important. Get external storage back-ups going, add to cloud, and invest in a fire-proof case. Really worth it as you think about how priceless some items would be to re-create or if that even is an option.

Pretty reasonable to grab 1-2 terabyte backups for back-up of files, pics and more. Full back-up setup for less than \$400 –  
TOTALLY WORTH IT FOR PEACE OF MIND.

**SHARING LARGE FILES**

Lastly, Randy showed us the tips for sharing sizable files through zip files. Family Tree Maker program backs up each night to Ancestry. If you would lose the program, you can send to MacKiev to get the download again and upload it.

Most importantly, remember the blue screen o' death does not need to mean the end of your data. Store ~ back-up ~ protect in multiples.

Thank you Randy – fantastic confidence booster to bring in data security. Well done!

**STILL NEED YOUR HELP NOW**  
**2 OPPORTUNITIES**

**1. YOUR JPEG'S NEEDED NOW FOR JULY MEETING**

- Randy will be working on another angle with AI and translation capabilities.
- Do you have a document needing translation or have one already translated and are willing to share with the group?
- Randy will use your docs in July's meeting to show how AI translates and interprets.
- **Now's your chance - PLEASE,** submit any document you are willing to share that can be featured as example.
- Send to Bob's MPAFUG email and he will get that to Randy to use.  
**[bobheckmpafug@gmail.com](mailto:bobheckmpafug@gmail.com)**
- MUST BE JPEG FORMAT – and go!

**2. SHOW & TELL 2026 – OCTOBER**

- **MEMBERS SHOW & TELL**
- Do you have something in your family that represents your heritage, hobbies or history?
- Do you have a funny, quirky or mysterious tale you have discovered in your research and want to share?
- We need 6 volunteers to present in October's meeting for about 10-15 minutes.
- Bob can help or make your slides for you to present. If needed, send him the text/wording you would like to use and any photos.
- **Contact Bob know if you are able to present – we would enjoy hearing your story.**

## **MUSINGS & MUTTERINGS:**

We count. Everything really. Chickens before they hatch, moments before sleep descends, birthdays, years as they pass, friends as we gain or sadly lose them. We count as humans.

Let's muse some ideas on counting:

- **1940 Census took two years to index**
- **1950 Census took 5 months using OCR to index**
- **20 Years ago Ancestry was indexing 2 million images a month**
- **10 Years ago Ancestry was using OCR to index 3 million per day**
- **In 2025 using Ai they can do 10 million records per day.**
- **They have a backlog of 5 billion images.**
- **Census is older than 37 states**
- **Keeps personal data secret for 72 years**
- **Currently processed by hiring a "small army" of around 500,000 workers to reach every household.**
- **72-Year Secret Rule:** The Census Bureau cannot release personally identifiable information to the public—including to law enforcement or immigration agencies—for 72 years, as mandated by Congress 24/7 Wall St
- **George Washington Oversaw the First Count:** In 1790, marshals on horseback covered 13 states, plus districts in Kentucky, Maine, and Vermont, counting roughly 3.9 million people.
- **First to Use Technology:** The 1890 census was the first to use automated tabulation with [Herman Hollerith's punch card machine National Geographic Society](#), reducing processing time from nearly a decade to two years.
- **The "Mean Center" of Population:** The census calculates a "center of population"—the point where the entire country would balance if it were a flat surface. This point has moved westward (currently in Missouri) over the last 200+ years, notes [National Geographic Society](#).

- **Everyone Counts:** The census includes citizens, non-citizens, legal residents, and undocumented individuals, ensuring all occupants of a household are included.
- **Apportionment Power:** The census directly determines how many seats each state receives in the U.S. House of Representatives.
- **Missing Information:** Before 1870, the census specifically counted enslaved people, often listing them as part of their enslaved household.



**MARCH meeting attendance ...**

28

***WE WOULD LOVE TO SEE YOU IN APRIL – BRING A FRIEND!***

### **MEMBERSHIP UPDATE**

***Membership in MPAFUG is open to anyone interested in learning more about computer genealogy.***

***\$12*** – the cost per calendar year membership that covers individual and family

***RENEW NOW FOR 2026 SO YOU DON'T MISS ANY MEMBER-ONLY BENEFITS ☺***

**Please send a check for \$12.00 made payable to MPAFUG or bring to the next meeting: Include: name, address, email & phone number.**

**Deborah A. Bluett  
MPAFUG Treasurer  
PO Box 229  
Delavan, WI 53115-0229**

## MPAFUG KEY INFORMATION

### STEERING COMMITTEE MEMBERS

## About This Newsletter

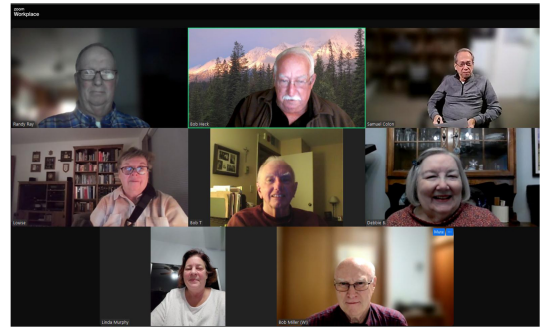
This newsletter is the official monthly publication of the Milwaukee PAF Users Group. All rights are reserved. No articles herein may be reproduced for profit or commercial gain without the express written consent of the Publisher or the Milwaukee PAF Users Group. Other PAF Users Groups may republish articles freely but must include credit to the authors and for the Milwaukee PAF Users Group Newsletter.

Members interested in submitting articles may email them to [bobheckmpafug@gmail.com](mailto:bobheckmpafug@gmail.com). The MPAFUG publisher will determine if an article will be used in this newsletter. Articles will be used as space permits.

NO COPYRIGHTED ARTICLES may be submitted without express permission of the author and publisher. Articles should be submitted by the 1<sup>st</sup> Wednesday to be considered for inclusion in that same month. Credit will be given for your article.

<b>Bob Heck</b>	<b>Debbie Bluett</b>	<b>Randy Ray</b>
<b>Bob Miller</b>	<b>Linda Murphy</b>	<b>Sam Colon</b>
<b>Bob</b>	<b>Merilyn</b>	<b>Steve</b>
<b>Tatalovich</b>	<b>Romani</b>	<b>Gulgowski</b>

Steering committee meetings are held via Zoom on the third Wednesday of the month except in December. The Steering Committee is an informal group of members who get together to plan topics for future meetings.



## RESOURCES

### ***The Family Search Center***

9600 West Grange Avenue, Hales Corners

The Family Search Center Library hours:

**Tuesday:** 8:30AM – 3:30PM  
**Wednesday:** 8:30AM – 12 Noon  
**Thursday:** 8:30AM – 3:30PM and  
6:30PM – 9:00PM  
**Saturday:** 10:00AM – 1:00PM

Enter at the main doors facing West Grange Avenue and follow the signs to the library.

On Thursday evenings, Bob Heck and Randy Ray are the volunteers on duty who will assist you in your research.

For some extra special help from May through September, Cheryl Heck is there to help you. Cheryl is LDS Mormon and is the expert in the Family Search website and LDS issues.

There are numerous portal systems available for free use at the center.

**Come enjoy this resource!**

### ***If you would like to make a presentation or have a suggestion for a meeting topic***

Write, call or email:

MPAFUG c/o Bob Heck

4910 Steeple Dr.

Greendale, WI 53129

414-421-7143

[bobheckmpafug@gmail.com](mailto:bobheckmpafug@gmail.com)

### **OUR WEB PAGE**

<http://mpafug.org>

**We invite you to visit our page, print a copy of this or last month's newsletter. You'll find a surname section where you can see who else is working on your family line.**

**Members of MPAFUG have access to a members-only web page which contains past newsletters and handouts from our meetings.**

**\*The New Berlin Public Library does not advocate for or endorse the viewpoints of meetings or meeting room users.**